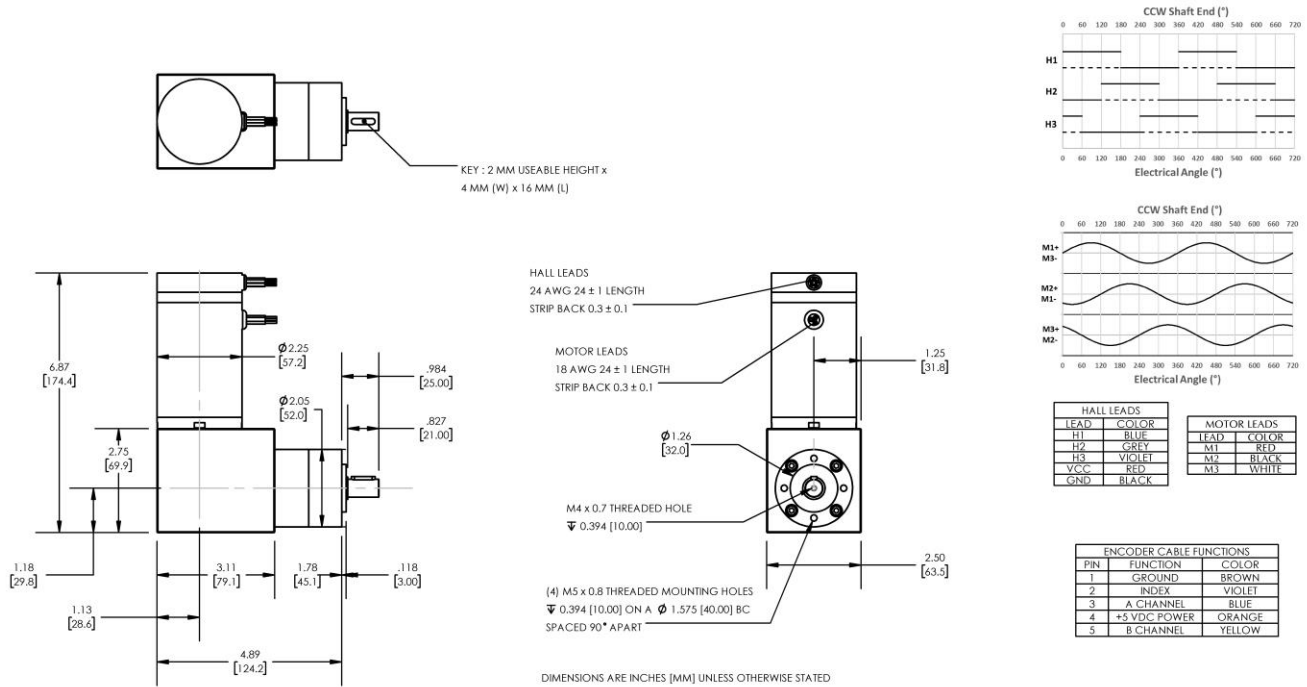


**Model Number:**

## MMP BL58-412G-48V GRA52-04.3



PLANETARY GEARMOTOR OUTPUT PARAMETERS:	VALUE	UNITS	TOLERANCE
Gearhead Ratio (exact)	4.28 : 1		
Gearhead Shaft Output Speed (at full-load)	794	RPM	MAX
Gearmotor Rated Continuous Torque	18	In-Lbs	MAX
Gearmotor Rated Peak Torque	47++	In-Lbs	----
Gearhead Standard Backlash	42	Arc Minutes	MAX
Gearhead Efficiency	80%	----	----
Output Shaft Radial Load Capacity	45	Lbs	MAX
Output Shaft Axial Load Capacity	14	Lbs	MAX
Gearmotor Total Weight	4.8	Lbs	MAX

++ All Peak Torque values are dependent upon duty. Contact our sales office for details.

DC MOTOR PERFORMANCE PARAMETERS:	VALUE	UNITS	TOLERANCE
Rated DC Voltage	48	DC VOLTS	----
Rated Continuous Current	6.6	AMPERES	----
No-Load Speed	4706	RPM	MAX
Rated Speed	3397	RPM	+/- 15%
Rated Continuous Power Out	216	WATTS	+/- 15%
Rated Continuous Torque	86	OZ-IN	----
Peak Torque (motor only)	217	OZ-IN	----
No-Load Current	0.34	AMPERES	MAX
Back EMF Constant (Ke)	10.2	V/KRPM	+/- 10%
Torque Constant (Kt)	13.8	OZ-IN/AMP	+/- 10%
DC Armature Resistance	2.03	OHMS	+/- 15%
Armature Inductance	1.71	mH	+/- 15%
Armature temperature	155	DEG. C	MAX

**NOTES:**

- ENCODER & BRAKE OPTIONS AVAILABLE – [FOLLOW THIS LINK FOR DETAILS](#)
- NEMA MOUNTING FLANGE OPTION AVAILABLE – [FOLLOW THIS LINK FOR DETAILS](#)

# MIDWEST MOTION PRODUCTS, INC

DESIGN, MANUFACTURING & DISTRIBUTION - MOTION CONTROL EQUIPMENT

[www.midwestmotion.com](http://www.midwestmotion.com)

email: [sales@midwestmotion.com](mailto:sales@midwestmotion.com)